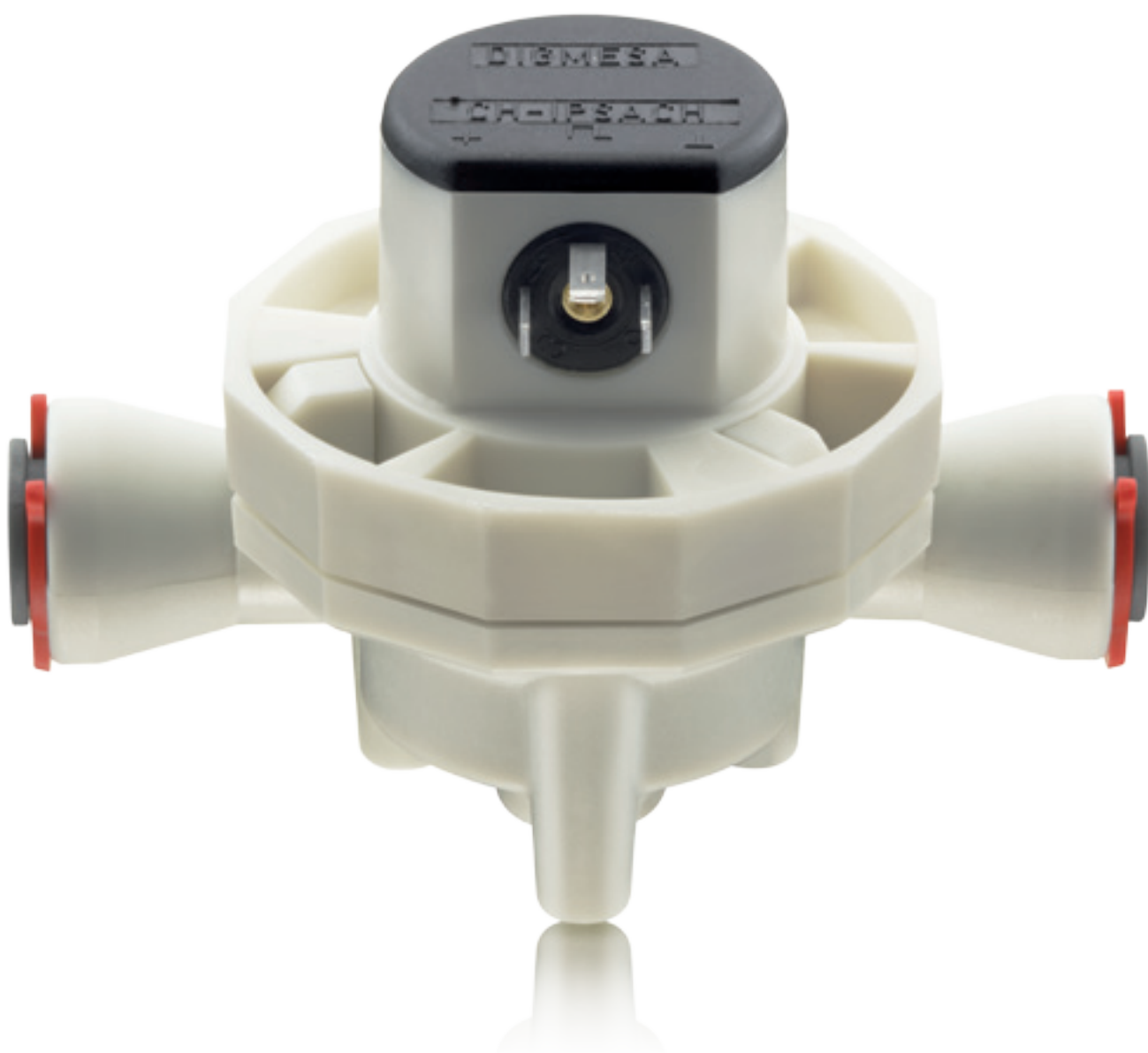


DIGMESA  
FF  
- THE  
FOOD  
LIQUID  
FLOW  
SENSING  
SOLUTION



# Flow Sensor FF Technical Information

Imagine it's match break. The order arrives: 50,000 beers, please! Here, when connected in series for simultaneous beer dispensing, the Classicline FF provides an outstanding solution. It was the first flow sensor in Germany to obtain SK certification for beer and is now a top seller. It can be opened without any tools for easy cleaning. The version with a jewel bearing allows the mounting position to be chosen freely. Moreover, with the optional integrated foam probe, it measures only the actual amount of liquid that has been transferred. This prevents errors caused by carbonated gas when the line is empty.

## Flow Rate l/min

---

Nozzle	Min	Max
4.0 mm	0.22	7.75
5.0 mm	0.34	11.50
6.0 mm	1.46	16.20

## Output Signal

---

Pulse

## Material

---

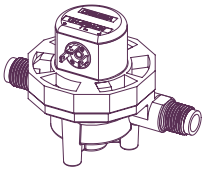
PBT (Fiberglass Reinforcement), PVDF

## Application examples

---

Beverages, sparkling fermented beverages foam detection only available in PBT (Fiberglass Reinforcement)

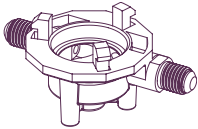
Housing Material	FF STD	FF Premium	FF Chemistry
------------------	--------	------------	--------------



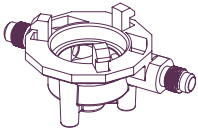
PBT (Fiberglass Reinforcement)	STD	STD	–
PVDF	–	–	STD

#### Process Connection

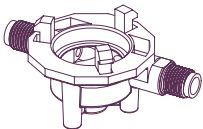
FFC 40 BSF 1/2" cola m/m (nozzle Ø 4.0 mm)	STD	STD	–
--	-----	-----	---



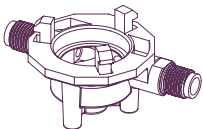
FFP 50 UNF 7/16" pepsi m/m (nozzle Ø 5.0 mm)	•	•	–
--	---	---	---



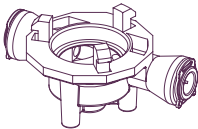
FFG 40 G1/4" m/m (nozzle Ø 4.0 mm)	•	•	–
------------------------------------	---	---	---



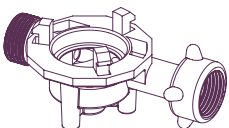
FFG 60 G1/4" m/m (nozzle Ø 6.0 mm)	•	•	STD
------------------------------------	---	---	-----



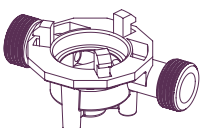
FF JG 3/8" f/f (nozzle Ø 5.0 mm)	•	•	–
----------------------------------	---	---	---



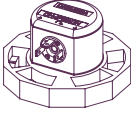
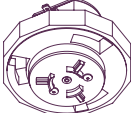

FFB 50 G5/8" m/f (nozzle Ø 5.0 mm)	–	•	–
------------------------------------	---	---	---



FFB2 50 G5/8" m/m (nozzle Ø 5.0 mm)	•	•	–
-------------------------------------	---	---	---



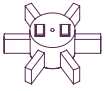
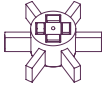
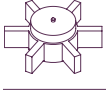
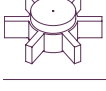

**EI. Connection**

3 pin amp 	STD	STD	STD
3 pin amp SM 	•	•	–
4 pin amp SM 	•	•	–




**O-Ring**

Silicon	STD	STD	–
FPM	•	•	STD
EPDM	•	•	•

**Turbine**

PVDF Low 2M (wetted magnets) 	STD	–	–
PVDF Low 4M (wetted magnets) 	•	–	–
PVDF / Ruby 2M (sealed magnets) 	–	STD	–
PVDF Chem. 2M (sealed magnets) 	–	–	STD
PVDF Chem. 4M (sealed magnets) 	–	–	•

**Bearing Pin**

Low bearing pin Inox 1.4305 	STD	–	–
Rubin bearing pin Inox 1.4404 / Rubin 	–	STD	–
Chem. bearing pin PCTFE 	–	–	STD

DIGMESA INTERNATIONAL LTD.  
BACHSTRASSE 3  
6362 STANSSTAD  
SWITZERLAND

WWW.DIGMESA.COM  
INFO@DIGMESA.COM

All measurements have been taken under ideal laboratory conditions.